

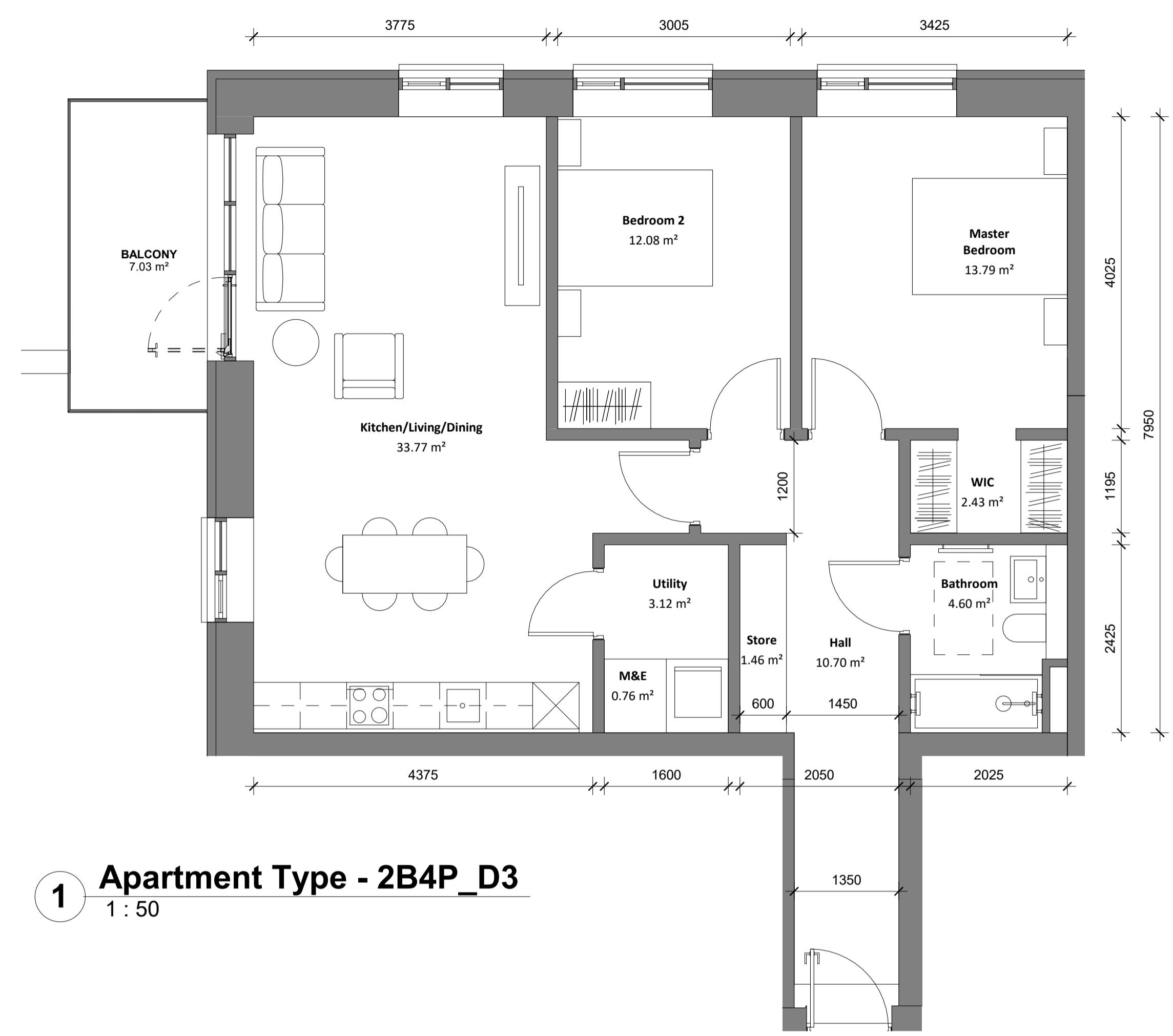
All dimensions to be checked on site. Figured dimensions take preference over scaled dimensions. Any errors or discrepancies to be reported to the Architects. This drawing may not be edited or modified by the recipient.

Copyright and ownership of this drawing is vested in RKD Architects, whose prior written consent is required for its use, reproduction or for publication to any third party. All rights reserved by the law of copyright and by international copyright conventions are reserved to RKD Architects and may be protected by court proceedings for damages and/or injunctions and costs.

RKD Architects' Quality Management Systems are certified to ISO 9001:2015.

Notes:

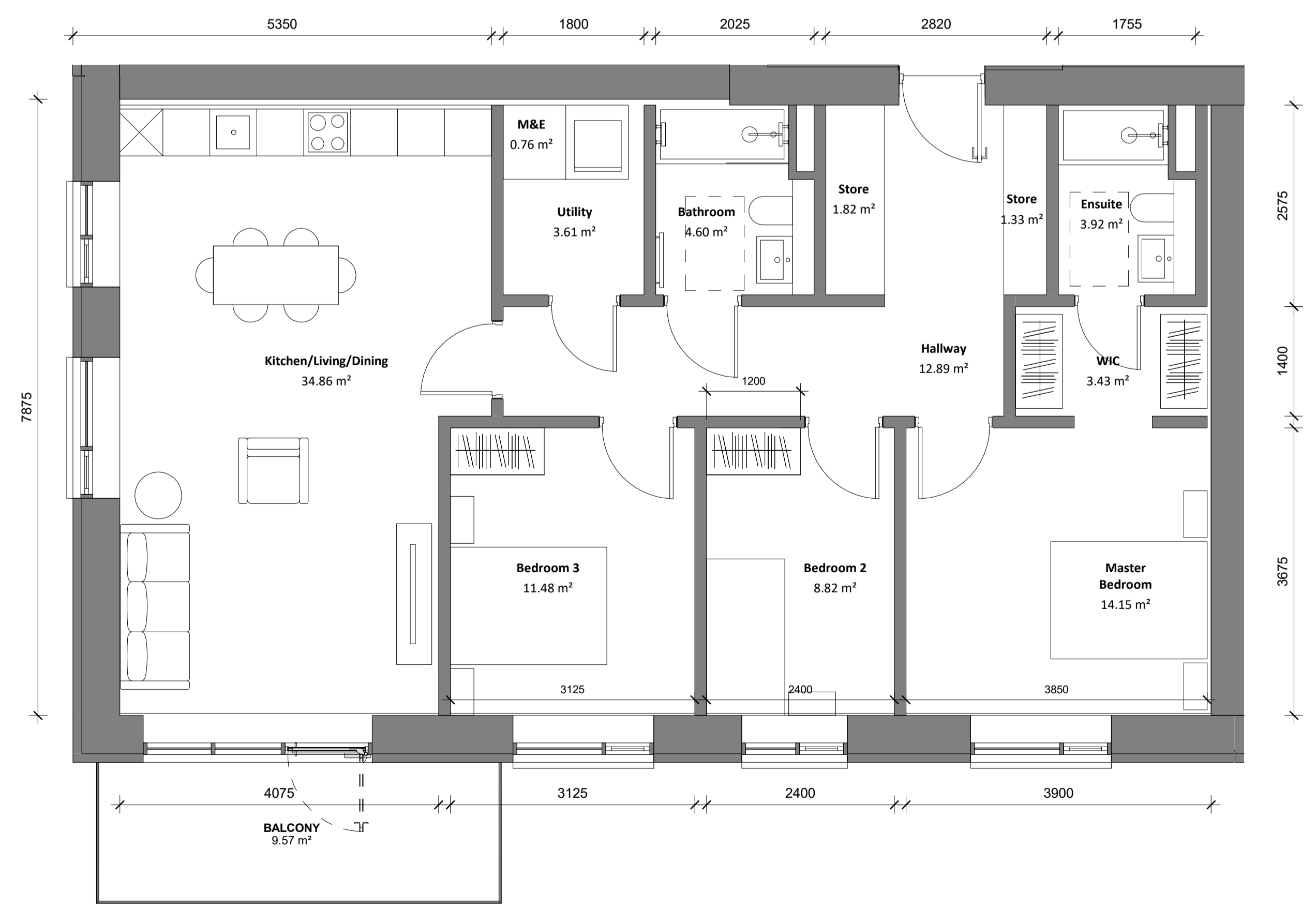
- UNIT TYPE D1**
2 Bed Apartment
- UNIT TYPE D2**
2 Bed Apartment
- UNIT TYPE D3**
2 Bed Apartment
- UNIT TYPE D4**
3 Bed Apartment



Apartment Type - 2B4P_D3		
Name	Minimum Area (NIA m2)	Area Proposed (NIA m2)
Kitchen/Living/Dining	30.00 m ²	33.77 m ²
Master Bedroom	13.00 m ²	13.79 m ²
Bedroom 2	11.40 m ²	12.08 m ²
GIA Floor Area		
	73.00 m ²	84.47 m ²
Aggregate Bedroom		
	24.40 m ²	25.86 m ²
Aggregate Living Kitchen Dining		
	30.00 m ²	33.77 m ²
Aggregate Storage		
	7.01 m ²	9.00 m ²
Private Amenity		
	7.00 m ²	7.03 m ²

1 Apartment Type - 2B4P_D3
1 : 50

Apartment Type - 3B5P_D4		
Name	Minimum Area (NIA m2)	Area Proposed (NIA m2)
Kitchen/Living/Dining	34.00 m ²	34.86 m ²
Master Bedroom	13.00 m ²	14.15 m ²
Bedroom 2	7.10 m ²	8.82 m ²
Bedroom 3	11.40 m ²	11.48 m ²
GIA Floor Area		
	90.00 m ²	111.08 m ²
Aggregate Bedroom		
	31.50 m ²	34.45 m ²
Aggregate Living Kitchen Dining		
	34.00 m ²	34.86 m ²
Aggregate Storage		
	9.00 m ²	10.18 m ²
Private Amenity		
	9.00 m ²	9.57 m ²



2 Apartment Type - 3B5P_D4
1 : 50

Rev.	Date	Description
P1	May 2022	Planning Submission
Beo Properties Ltd		
STATUS: PLANNING		
PROJECT: Ratoath South SHD		
PROJECT ADDRESS: Ratoath South, Co. Meath		
DWG TITLE: APARTMENT D3 & D4 DETAIL DESIGN - PLANS		
DWG NO: 21088-20188-RKD-ZZ-DR-A-1531		
REV.	STATUS	PROJECT NO.
P1	A3	21088
DATE	SCALE	1 : 50
May 2022	DRN	ROC
	CHK	DC
RKD		
59 Northumberland Rd Ballybride, Dublin 4 D04 W9P6 Ireland		
+353 1 668 1055 mail@rkd.ie rkd.ie		